



Action for affordable warmth

Welcome to Wolverhampton Affordable Warmth News! This issue brings you up to date with the latest news about the energy efficiency league tables, the Wolverhampton Show and Wolverhampton's new fuel poverty mapping tool. For more information from the action group, visit:

www.wolverhampton-affordable-warmth.org.uk

Contents:

Page 1:
Wolverhampton climbs the energy efficiency tables

Page 2:
Wolverhampton Homes renewable pilot scheme and the City Show

Page 3:
Affordable Warmth Strategy updated

Page 4:
Wolverhampton's new fuel poverty mapping tool

Wolverhampton continues to climb eaga's energy efficiency league tables

Recent figures from the Government's Warm Front Scheme Manager, eaga, reveal that Wolverhampton is becoming one of the most energy efficient local authorities in the region.

The city has come third in eaga's annual league tables for the number of Warm Front grants it has delivered to vulnerable households in the West Midlands.

Between April 2006 and March 2007, over £2,500,000 of Government funded Warm Front grants were awarded in Wolverhampton. As a result more than 2,400 residents were able to benefit from improved heating and insulation in their homes.



Cllr Peter Bilson of Wolverhampton City Council, said: "We are delighted that Warm Front has helped make so many homes in Wolverhampton warmer and more energy efficient.

"It's only by working together that we will ensure that Warm Front reaches as many people as possible. We don't want people to miss out and spend another winter in the cold."

Ravi Kumar, Warm Front Coordinator for the West Midlands, added "There is more help available for people who struggle to keep warm in winter.

This is a very popular scheme and we would encourage Wolverhampton residents to apply early for the grant to ensure the best chance of the work being completed before the cold sets in."



Action for affordable warmth

Fuel Poverty Facts

Ashmore Park has the highest number of homes without central heating in the city, at over 35%

Nearly half of the properties in Wolverhampton have not got cavity walls, making them harder to insulate.

Over two thirds of the cavity walls in the city have now been insulated.

Wolverhampton Homes renewable pilot scheme

Wolverhampton Homes are piloting a solar hot water scheme on a small number of properties to look at the viability of this form of micro-generation.

The systems have been fitted on four properties that are similar but have different levels of occupancy to see how improvements will affect a range of household types.

The properties are located in areas with high levels of fuel poverty and each is considered hard to heat due to its construction. However they all have south facing roofs with large surface areas, making them suitable for a solar water heating system. It is estimated that each system can save up to 50% on the average home's hot water bills.

Fuel bills prior to the solar water heating installations have been collected from the properties, and these will be compared with next year's fuel bills and the findings analysed.

Wolverhampton City Show

Wolverhampton City Council and the Wolverhampton Energy Efficiency Advice Centre worked together to provide an energy advice stall at the Wolverhampton City Show, on the 7th and 8th of July.

The weekend event was a great success providing local residents with over 400 energy saving light bulbs and 200 PowerDowns. These computer multi-plugs are designed to save money and hassle by automatically switching off any equipment (for example a printer) connected to a computer when it is shut down.



The energy saving light bulbs were awarded to anyone who was willing to commit to saving 20% of the energy consumed in their homes. The 150 PowerDowns that were given to vulnerable people in receipt of benefits should help to reduce their fuel bills by up to £37 per year.



Action for affordable warmth

90% of all homes in Wolverhampton with loft space have some insulation in them. The majority of these have a high level of insulation.

Almost 45% of homes in Wolverhampton have no double glazing at all.

Finchfield has the city's highest percentage of people who own their own homes.

Revised Affordable Warmth Strategy sets new targets for Wolverhampton

Wolverhampton was one of the first cities in the UK to produce an Affordable Warmth Strategy in 1999. Since then there have been a growing number of other issues to consider including climate change, rising fuel bills and security of supply.

The Strategy & Action Plan

- Delivering Affordable Warmth
- Saving Energy
- Addressing Climate Change

To provide an affordable energy service

As concerns over energy prices and stocks continue, alternatives to conventional gas and coal are vital to delivering affordable warmth for Wolverhampton's residents in the long term. Therefore renewable technologies must be explored to provide local, sustainable and affordable energy solutions for residents that do not contribute to climate change.

A new housing development in Low Hill will provide special solar collectors that provide solar heated hot water, solar air-heating, home ventilation and air-cooling in a mix of 205

Cross Street South, Wolverhampton

Wolverhampton Homes have installed solar hot water systems in 15 properties and will monitor their use to see if there is potential for further installations.

The Strategy has been updated to reflect the changing environment and to set clearer objectives, including targets for reducing fuel poverty, reducing energy consumption and cutting carbon emissions.

The priorities of the original Strategy are retained, with attention focused on helping vulnerable residents from different tenures, providing advice on saving energy and investigating innovations in traditional and renewable technologies and sustainable housing.

An affordable warmth leaflet has been produced to promote the Strategy and this will be distributed to local groups and organisations throughout Wolverhampton.

The Strategy now encompasses the activity of the partner organisations involved in its delivery, including neighbourhood partnerships who ensure that initiatives have a real focus at the local level. Voluntary organisations such as Age Concern are also playing an increasingly important role in promoting the Strategy's messages.

If you would any copies of the leaflet or the Strategy itself please contact Tom Winckley on 01902 551346 or by e-mail at tom.winckley@wolverhampton.gov.uk.



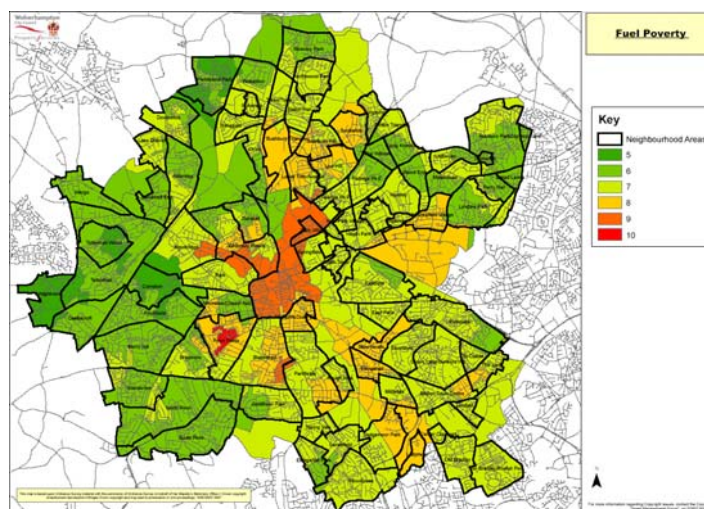
Action for affordable warmth

If you have any news or stories that you would like to see in the next Affordable Warmth newsletter you can e-mail them to:
mark.hamilton@hestiaservices.co.uk

Wolverhampton's fuel poverty mapping toolkit

Members of the Wolverhampton Affordable Warmth Action Group are continually working together to find innovative ways to help overcome fuel poverty. A new fuel poverty mapping tool has been created that is already helping to identify areas of the city where residents are most likely to be vulnerable.

This information will be invaluable in the targeting of awareness raising mailing campaigns designed to inform vulnerable people of the grant and discount schemes already available in their areas.



The toolkit can also help to determine the most effective ways of tackling fuel poverty in Wolverhampton and is already being used in the development of new schemes, enabling the Action Group members to target homes in specific areas with measures tailored to their needs.

A range of fuel poverty maps has been produced for Wolverhampton and these are now available on the Affordable Warmth website.

www.wolverhampton-affordable-warmth.org.uk

If you would like to find out more about any of the grants and schemes mentioned in this news letter you can contact your local Energy Efficiency Advice Centre on free phone:

0800 512 012

