



# Action for affordable warmth

Welcome to Wolverhampton Affordable Warmth News Summer 2009!  
This issue brings you up to date with the latest news about new schemes which are up and running across the city and beyond.

For more information from the action group, visit:  
[www.wolverhampton-affordable-warmth.org.uk](http://www.wolverhampton-affordable-warmth.org.uk)

## CONTENTS

**Page 1**  
Low Carbon Grants now available

**Page 2**  
FREE real time electricity monitors

**Page 3**  
Thermal imaging survey in Wolverhampton

**Page 4**  
Warm Front grant for even more people

### LOW CARBON GRANTS NOW AVAILABLE IN WOLVERHAMPTON

With ever changing energy prices and concerns about the impact of climate change Wolverhampton City Council are now offering residents further assistance through a new 'Low Carbon Grant' scheme. Anyone eligible for one of these grants can apply for a range of different measures for 'hard to heat homes' up to £7,500 including solar hot water systems and internal wall insulation.

Many homes will have already received a number of energy efficiency measures such as A-rated boilers and loft insulation. However, anyone living in a property built before the 1930s is likely to have walls without cavities meaning they cannot benefit from cavity wall insulation. A pilot project last year was carried out for Sempatap, a flexible insulation lining that can be fitted internally to reduce heat loss. As it is thinner than conventional internal wall insulation the room size is not significantly reduced. Customer feedback from the trials with local residents was very positive so it will now be available citywide (subject to eligibility criteria).

Solar hot water systems are also available under the Low Carbon Grants scheme. As well as helping reduce hot water bills they enable residents to take direct action to tackle climate change. Three systems have already been installed under a preliminary trial including one at Mr Patel's home.



'I'm really happy with my new solar hot water system as it has helped cut my fuel bills. The installers [New World Solar] were very professional and I would recommend it to anyone who wanted to do their bit to help the environment'.

If you would like more information about Low Carbon Grants and find out if you qualify please contact the Energy Saving Trust advice centre on **0800 512 012** for further details or go to the Council's energy web pages at [www.wolverhampton.gov.uk/energy](http://www.wolverhampton.gov.uk/energy).

# Action for affordable warmth

Average energy consumption in Watts per hour of some typical household electrical appliances :

- Dishwasher - 3,000
- Tumble dryer - 2,500
- Kettle - up to 3,000
- Electric hob four ring - 2,500
- Toaster - up to 1,360
- Widescreen TV - 70
- TV standby - 5
- DVD Player - 15
- Games consol (varies depending on format) - 50

## FREE REAL TIME ELECTRICITY MONITOR TO HELP YOU MANAGE YOUR ELECTRIC BILLS!

British Gas, in partnership with Wolverhampton City Council, is offering free Real Time Electricity Monitors to Wolverhampton residents for a limited period. Anyone who receives an income based benefit, or who is aged 70 or over, can send off a coupon (which are available at Wolverhampton City Council Civic Centre, 2nd Floor, Reception 24) and get a monitor sent in the post. You don't even need to be a British Gas customer.

If you have ever opened your electric bill, staggered back in disbelief and wondered why it is so high a Real Time Electricity Monitor may be just the thing you need. Simply attach the sensor to the meter point in your home and place the small display unit somewhere you can see it. The sensor relays the energy consumption to the display unit in real time. You can then set it so any electricity being used in the home will be showed on the display in kilowatts, CO2 emissions or pounds and pence.



It is amazing just how much energy can be consumed just by leaving electrical appliances on standby or mobile phones plugged in after they have finished charging. With some simple detective work it is possible to identify just how much energy is being used unnecessarily and it really makes you appreciate the energy consumption of items such as kettles and fan heaters.

As part of the offer you can also request a FREE energy saving socket. Once plugged in and set up it ensures that when you turn off your TV all the other peripherals such as the DVD player and VCR are turned off leaving nothing on standby. Two of the sockets can be used in Standby Saver mode or left on permanently when required, for example for DVD or video recorders that are set to record on timers. Of course if you have your doubts about this just check your Smart Energy Meter!

If you would like more information about how to save energy in the home please call the Energy Saving Trust advice centre on freephone number **0800 5120 012** or go to the Council's own energy webpages at [www.wolverhampton.gov.uk/energy](http://www.wolverhampton.gov.uk/energy).

# Action for affordable warmth

## CALL FOR A FREE SURVEY

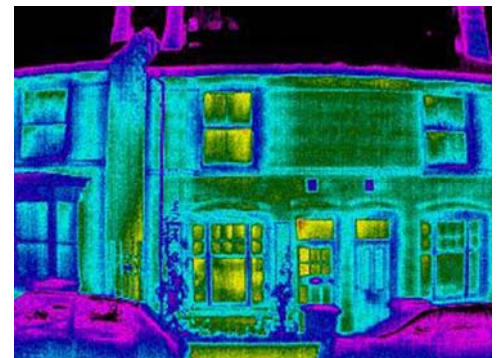
Anyone who would like to find out more about grants or discounted rates for cavity wall and loft insulation can call the Energy Saving Trust advice centre on **0800 512 012** for a free survey.

## THERMAL IMAGING SURVEY

Wolverhampton City Council in conjunction with Wolverhampton Homes, have commissioned 'Cities Revealed' to carry out an aerial thermal imaging survey of the entire City. Wolverhampton City Council is committed to reducing the City's carbon dioxide emissions by 12% by 2011 and the UK Climate Change Bill 2008 commits the UK to reducing its emissions by 60% by 2050. The thermal imaging survey will be used to identify properties which are poorly insulated and help people save money on their fuel bills at the same time.

Some 30% of CO2 emissions in Wolverhampton are linked to the energy used in buildings including heating, air conditioning, lighting and cooking. Uninsulated buildings can lose up to 25% of heat through their roofs. A typical three bedroomed semi detached house without loft insulation produces 7.8 tonnes of carbon dioxide each year but insulating the loft to a depth of 12 inches will reduce the CO2 emissions to around 6.4 tonnes. This reduction is the equivalent to 9 double decker buses full of carbon dioxide! Installing cavity wall insulation reduces emissions by a further 4.7 tonnes and installing both measures saves approximately £250 a year on fuel bills.

The best thermal imaging results are obtained in cold, dry weather conditions which is generally during the winter months. To avoid the influence of the sun, the survey needs to be done at night. By using a thermal camera aboard a small plane to measure roof temperatures, a snapshot of the heat loss from roofs across the city has now been achieved. Those that



lose the most energy will be immediately visible on the map. The redder they appear on the map, the more heat they are losing! These thermal images will provide an excellent indication of the quality and quantity of roof insulation and when combined with information on the use, structural type and age of the building, information regarding the carbon dioxide emissions can be calculated.

Once the data has been analysed the Council will use it to identify those properties which will benefit from insulation and other energy efficiency measures. This data will help to assist residents with upcoming funds such as the Community Energy Saving Programme (CESP). This programme will involve a door to door community based approach to encourage people to access insulation and other energy efficiency measures. Ideally, residents will install both loft and cavity wall insulation, reducing both their fuel bills and the carbon footprint of Wolverhampton.



# Action for affordable warmth

## CONTACT US

If you think you may qualify for Warm Front please contact the Energy Saving Trust advice centre free on **0800 512 012**.

Even if you do not qualify for Warm Front you may qualify for other heating and insulation grants which are available only in Wolverhampton.

For more information on all schemes please go to

[www.wolverhampton.gov.uk/energy](http://www.wolverhampton.gov.uk/energy)

or call the freephone number above.

## WARM FRONT GRANT IS AVAILABLE TO EVEN MORE PEOPLE!

Whilst the summer is nearly upon us the last thing on many people's minds is lagging their lofts or getting a new heating system. However, it may surprise many that insulating your walls and loft actually keeps your home cooler in the summer as well as keeping the heat in during colder spells. Due to their popularity central heating grants can take several weeks from point of referral to installation so applying now is much better than waiting for work when the temperature starts to drop.



There has never been a better time to apply as the criteria for the Government's Warm Front scheme has changed so people who receive the new 'Employment and Support Allowance' benefit can qualify if they are over 60 or have a child under 16. Residents with the existing eligibility criteria can still qualify for Warm Front – go to [www.warmfront.co.uk](http://www.warmfront.co.uk) for more information. The Government has recently announced that the maximum grant available has now increased from £2,700 to £3,500 meaning fewer people will have to make a contribution towards the grant. However, if you have been asked to make a contribution, Wolverhampton City Council may be able to pay for these excess costs. Unfortunately they cannot assist if the client has already paid the outstanding amount.

In 2008 and 2009 nearly 2,300 people have been referred to the Warm Front scheme in Wolverhampton. During that period 589 boilers have been replaced, 162 walls have been filled, 425 lofts and 108 central heating systems have been installed.

Please e-mail any news or stories that you would like to see in the next Affordable Warmth Newsletter to: [jessica.elges@hestiaservices.co.uk](mailto:jessica.elges@hestiaservices.co.uk)

To find out more about any of the grants and schemes mentioned in this newsletter you can contact your local **Energy Saving Trust advice centre** free on:

# (0800) 512 012

